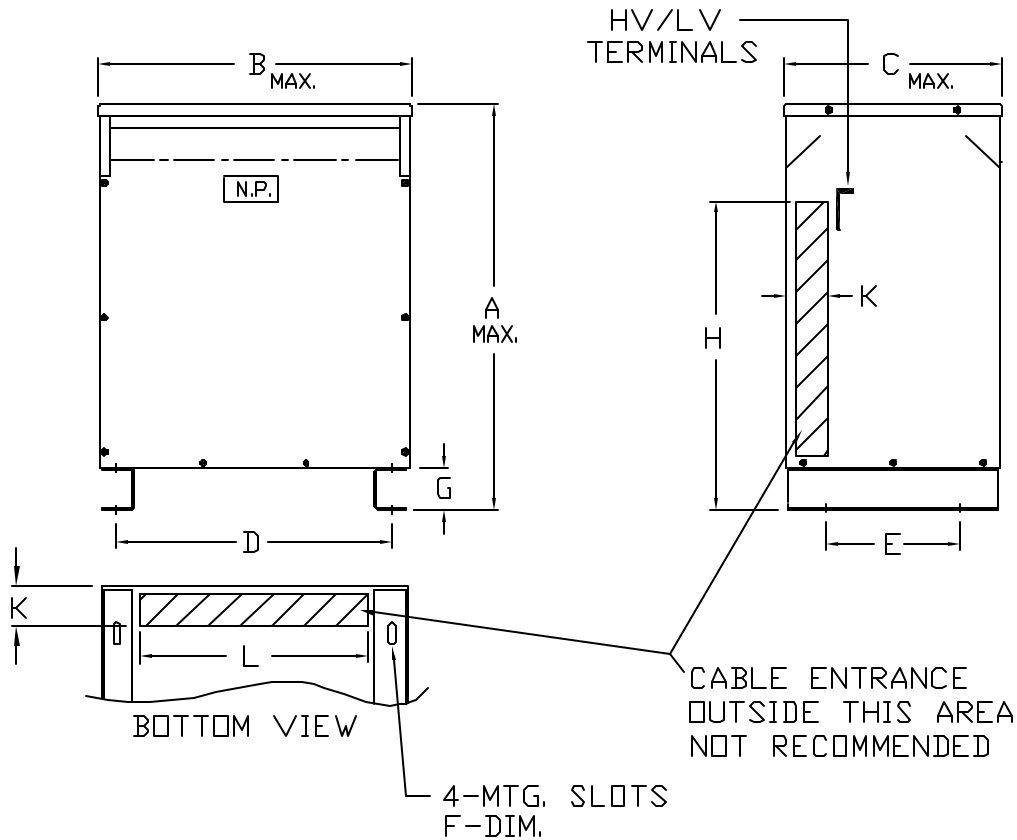


Jefferson Electric

DRY TYPE TRANSFORMERS



KVA	TEMP. RISE °C	NET WT. LBS.	DIMENSIONS IN INCHES									
			A	B	C	D	E	F	G	H	K	L
15	150	210	22.00	19.00	16.00	16.38	12.00	.56 x 1.13	3.00	12.00	3.00	13.00
30	150	310	25.00	22.00	17.00	17.38	13.00	.56 x 1.13	3.00	13.00	3.00	15.00
45	150	400	28.00	25.00	18.50	20.75	14.50	.56 x 1.13	3.00	16.00	3.00	17.00
75	150	585	32.00	27.00	21.00	23.50	16.00	.56 x 1.13	3.00	18.00	3.00	20.00
112.5	150	775	38.00	29.00	23.00	25.50	18.00	.56 x 1.13	3.00	20.00	3.00	22.00
150	150	1000	42.00	33.00	26.00	29.50	21.00	.56 x 1.13	3.00	23.00	4.00	25.50

NOTES:

1. ALL UNITS ARE UL LISTED AND ARE DESIGNED IN ACCORDANCE WITH ANSI C89.2 AND NEMA ST-20 STANDARDS.
2. THESE TRANSFORMERS UTILIZE A UL RECOGNIZED 220°C INSULATION SYSTEM, TEMPERATURE RISE AS INDICATED IN THE TABLE.
3. TRANSFORMERS ARE DRY TYPE, CLASS AA, VENTILATED ENCLOSURE FOR INDOOR USE. OPTIONAL WEATHER KITS ARE AVAILABLE FOR ADAPTING THE UNIT FOR 3R USE WITHOUT VOIDING THE UL LABEL.
4. PAINT COLOR IS ANSI #61 GRAY.
5. FULL WIDTH COPPER ELECTROSTATIC SHIELD (OPTIONAL).
6. 6" REQUIRED CLEARANCE FROM THE WALLS.
7. HV/LV TERMINALS ARE TOP FRONT TERMINATED.



GENERAL PURPOSE TRANSFORMERS
THREE-PHASE, 600 VOLTS CLASS, 60 HZ.
K-FACTOR (1) RATED - ALUMINUM - TP1

PCD 423-700A-150

REV.
C