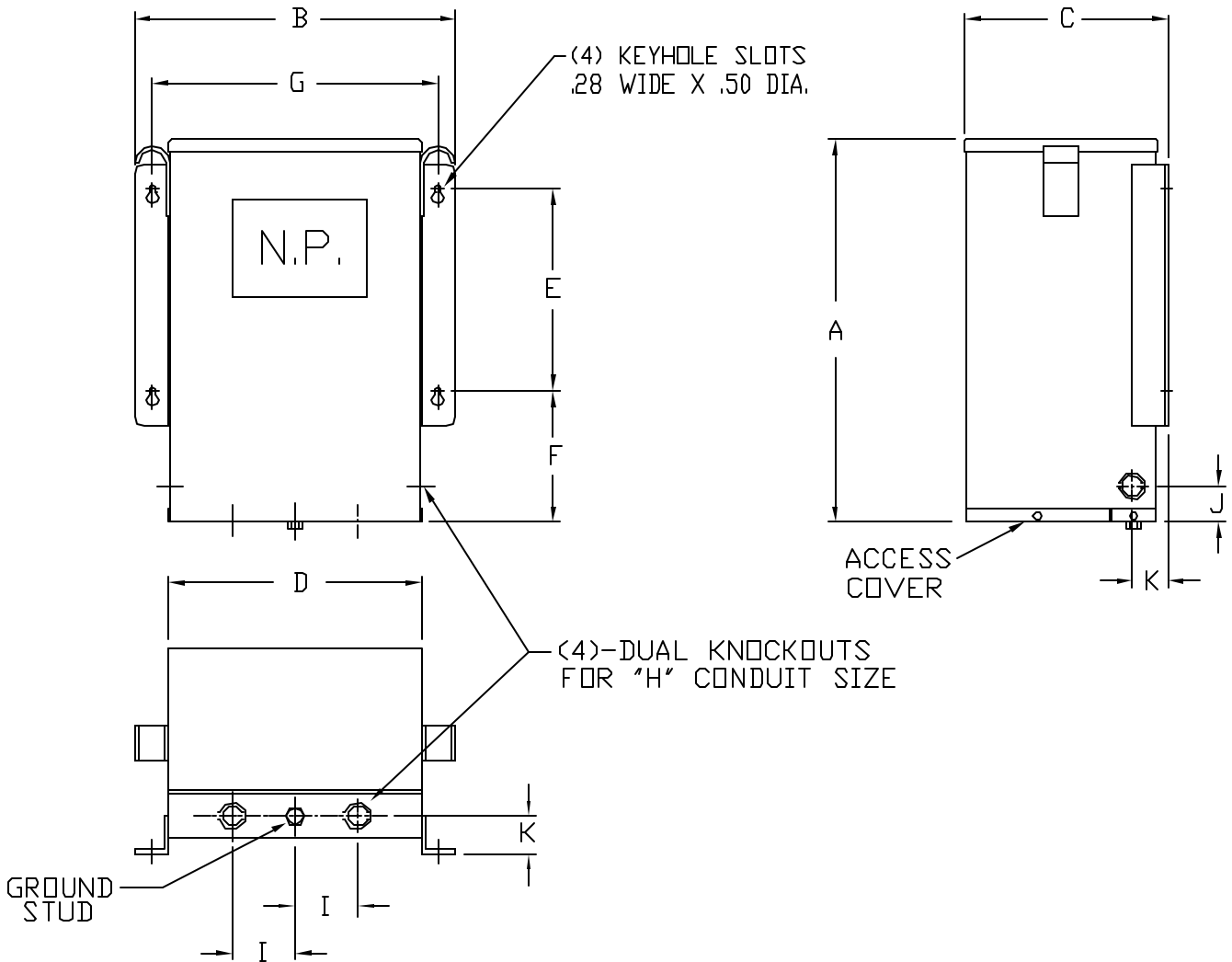


Jefferson Electric

ENCAPSULATED TRANSFORMERS



KVA	TEMP. RISE C°	NET WT. LBS.	HOUSING DIMENSIONS										
			A	B	C	D	E	F	G	H	I	J	K
3	135	82	13.12	15.12	8.06	12.25	5.25	5.50	13.62	3/4" & 1"	3.00	1.75	2.00
6	135	119	13.12	15.12	8.06	12.25	5.25	5.50	13.62	3/4" & 1"	3.00	1.75	2.00
9	135	157	15.12	19.00	9.06	16.12	8.25	5.12	17.50	3/4" & 1"	4.00	1.75	2.00
15	135	228	15.12	19.00	9.06	16.12	8.25	5.12	17.50	3/4" & 1"	4.00	1.75	2.00

NOTES:

- ALL UNITS ARE UL LISTED AND DESIGNED IN ACCORDANCE WITH ANSI, NEMA, AND CSA STANDARDS.
- THESE TRANSFORMERS UTILIZE A UL RECOGNIZED 180°C INSULATION SYSTEM, TEMPERATURE RISE AS INDICATED IN THE TABLE.
- TRANSFORMERS ARE ENCAPSULATED WITH ELECTRICAL GRADE RESIN IN A NEMA 3R-RATED ENCLOSURE. BUILT IN ACCORDANCE WITH NEMA, ANSI, UL, AND CSA STANDARDS.
- PAINT COLOR IS ANSI #61 GRAY.



GENERAL PURPOSE TRANSFORMERS
THREE-PHASE, 600 VOLTS CLASS, 60 HZ.
ENCAPSULATED - ALUMINUM WOUND

PCD 413-FIGURE-4

REV.
A